



Don't put your recyclables in plastic bags!

All containers below must be **EMPTY, RINSED** and **LOOSE** in the box/cart.

*Any item with a diameter 3 inches (7.6 cm) or smaller is **not** accepted in the NES Recycling Program.*



Aluminum Cans



All Plastic Bottles
remove & discard caps



EMPTY Flexible Plastic Bags
empty bags (e.g. grocery store plastic bags) can be placed inside each other (bundled) - **no loose plastic bags**



Clamshells & Trays (Plastic)



Glass Bottles & Jars
remove & recycle metal lids



Plastic Tubs & Lids
tub lids **CAN** be recycled



Plastic Jugs
remove & discard caps



Plastic Egg Cartons



Metal Cans & Lids
remove & recycle metal lids



Buckets / Pails
discard lids, remove any metal handles

NES Recycling Program Reminders & What Can't Be Recycled

Blue Box / Cart

Containers must be placed in the Blue Box or the Container Recycling Cart. Container items can't be mixed with paper items in the same box/cart. If they are mixed - the whole box/cart becomes contaminated (as we have a two-stream program) and will NOT be collected.



Approved Blue Box

Box Weight Limit: 20 kg / 44 lb



Approved Recycle Cart

Must be outfitted with the Standard North American Lifting Mechanism and must be labeled for one type of material (i.e. containers).

Day Collection: Set-out by 6:00 a.m.

Do NOT put these materials in the Blue Box / Cart.

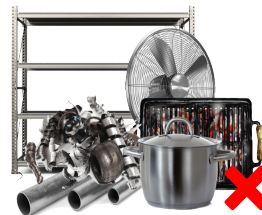
Recycling tied in plastic bags is not recycled and ends up in landfill.

Our two-stream recycling program is material specific. If you put any of these 'unaccepted items' in your recycle boxes they become garbage in this program.

Cross Contamination: Refers to the act of mixing paper products and containers in the same box/cart. This causes serious operational issues at our facilities.



No Propane Tanks



No Scrap Metal



No Stringy Things



No Paper



No Clothes



No Plastic Products



No Garbage

RedBoxGuide

ESSEX COUNTY / NES RECYCLING PROGRAM

All paper products below must be EMPTY (No Food).



White Office Paper



Newspapers
remove any plastic bags/inserts



Magazines & Junkmail
remove any plastic bags/inserts



Boxboard
remove any plastic liners/bags



Cardboard
breakdown boxes no larger than 30"x 30"x 30"



Pizza Boxes
please eat or remove pizza - if bottom is overly greasy, please tear off and throw in garbage



Paper Packaging



Shredded Paper & White Office Paper
place in a clear plastic bag - ONLY shredded paper can be placed in a clear plastic bag

NES Recycling Program Reminders & What Can't Be Recycled

Red Box / Cart

Paper must be placed in the Red Box or the Paper Recycling Cart. Paper items can't be mixed with container items in the same box/cart. If they are mixed - the whole box/cart becomes contaminated (as we have a two-stream program) and will NOT be collected.

Approved Red Box
Box Weight Limit: 20 kg / 44 lb

Approved Recycle Cart
Must be outfitted with the Standard North American Lifting Mechanism and must be labeled for one type of material (e.g. paper).

Day Collection: Set-out by 6:00 a.m.

Cardboard Boxes

Large cardboard boxes must be broken down - no larger than 30"x 30" x 30" - otherwise it will not be picked up.

30" x 30" x 30"

Do NOT put these materials in the Red Box / Cart.

Recycling tied in plastic bags is not recycled and ends up in landfill.

Our two-stream nes recycling program is material specific. If you put any of these 'unaccepted items' in your recycle boxes they become garbage in this program.

No Plastic Bags
(except for clear plastic bags containing shredded paper)

No Garbage

No Propane Tanks

No Containers