

Addendum 1B: MRF Pictures

A. Container MRF

Fig 1.0 – Exterior Container MRF (SW- NE)



Fig 1.1 – MRF tip floor and west portion of hopper and sorting equipment



Fig 1.2 – South portion of C1 (hopper) feeds materials to the process line



Fig 1.3- South portion of the processing equipment adjacent to C1 hopper



Fig 1.4- South portion of processing equipment and the baler infeed line



Fig 1.5- Processing mezzanine that houses the optic sorter and its compressor; along with baler



Fig 1.6 – Southeast view of process equipment, mezzanine and structure



Fig 1.7- Push wall (NOT to be removed) adjacent to hopper that separates main processing equipment from tip floor.



Fig 1.8 – Back of Push wall for the tip floor’s northeast side, along with supporting braces



Fig 1.9 – Bottle processing area located up on mezzanine



Fig 1.10 - Optic Sorter located on mezzanine



Fig 1.11 – Optic Sorter Name plate



Fig 1.12 – Kaeser SK 20 located on the mezzanine next to the optic sorter that supplies the Optic system



Fig 1.13 – East portion of the Sort Room showing sprinkler disconnect point



Fig 1.14 –Control panels and HVAC located in sort room.



Fig 1.15 – Bracing under north portion of sort room and processing equipment



Fig 1.16 – Cat walk (north end of MRF building) to sort room



Fig 1.17 – Magnet conveyor located off cat walk



Fig 1.18 – Main Distribution Panels located inside panel room adjacent to lunchroom



B. Fibre MRF

Fig 2.0 – Exterior Fibre MRF



Fig 2.1 – Eastern portion of processing equipment and second floor sort room

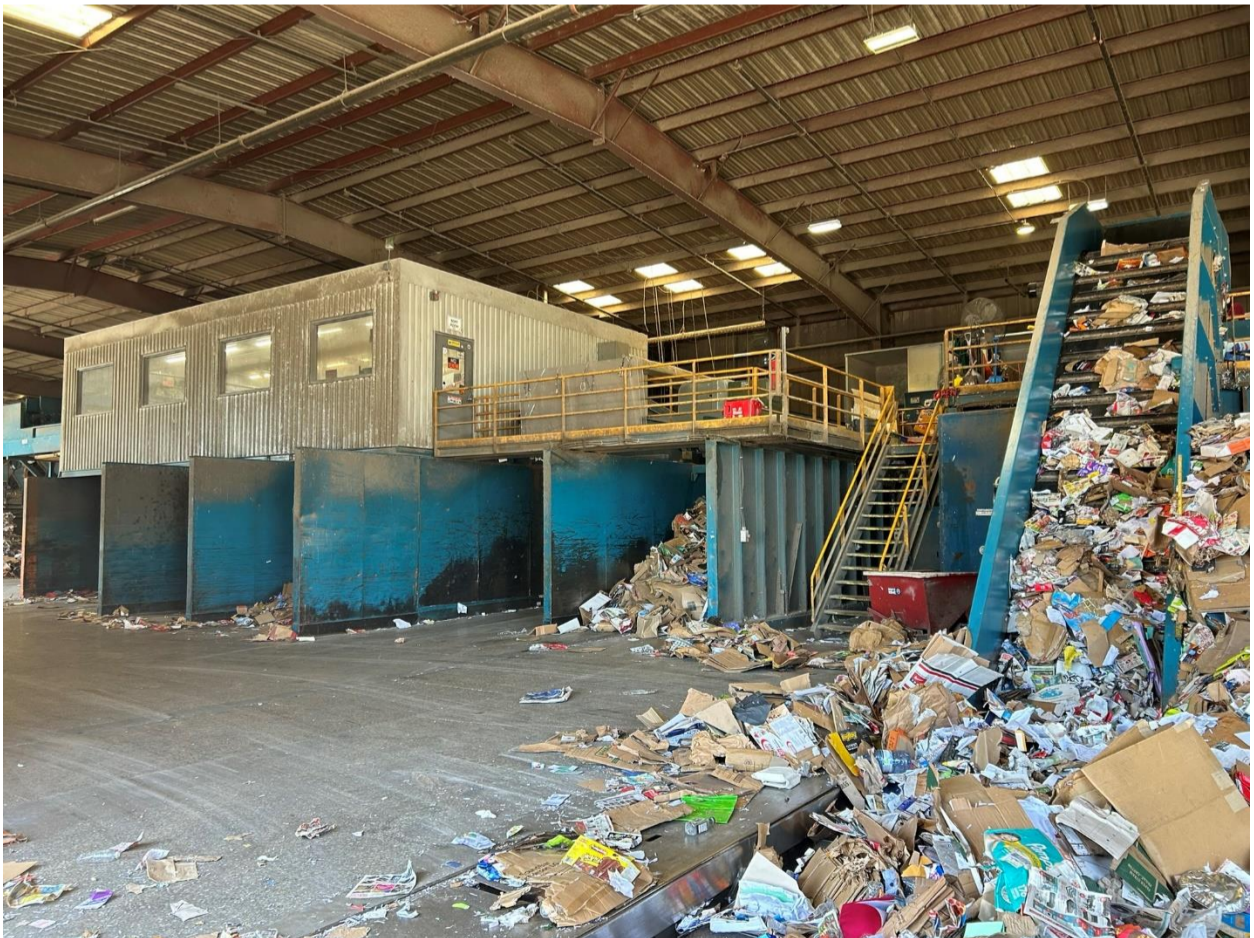


Fig 2.2- Processing equipment, bunker walls, and sort room



Fig 2.3- Left to right: fibre optic compressor room, pedestrian stairs, and second floor sort room



Fig 2.4- Compressor room and baler infeed underneath room



Fig 2.5 – Southeast overview of compressor room, stairs, sort room



Fig 2.6 – Second floor access to staff lunchrooms located next to the American Baler

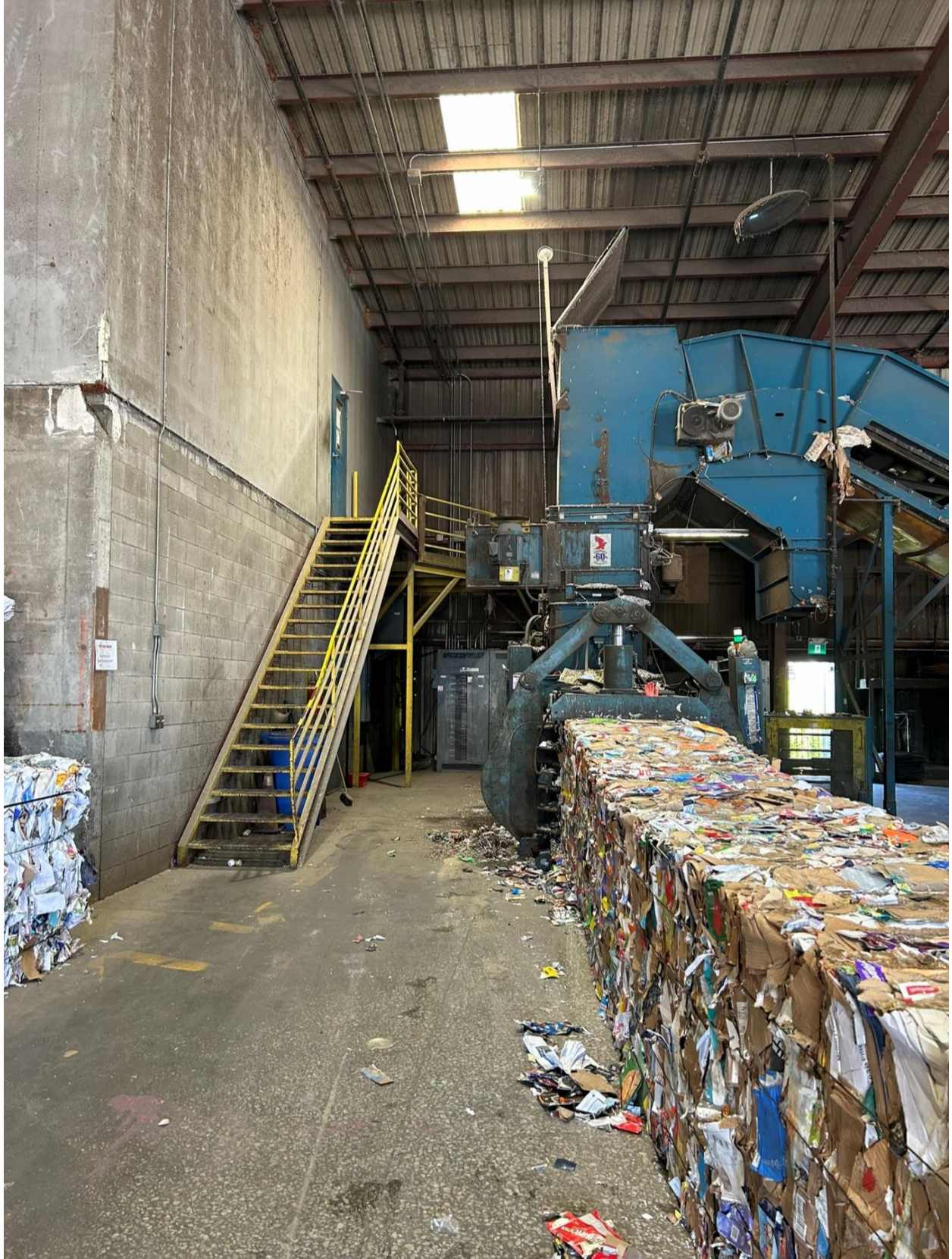


Fig 2.7 – American Baler Name Plate



Fig 2.8 – Baler tie wire racks (to be removed) located west of the baler



Fig 2.9 – Sprinkler line disconnect point (supply coverage under sorting equipment) on compressor sort room



Fig 2.10 – North bracing for compressor room/mezzanine, and the low baler infeed conveyor wall

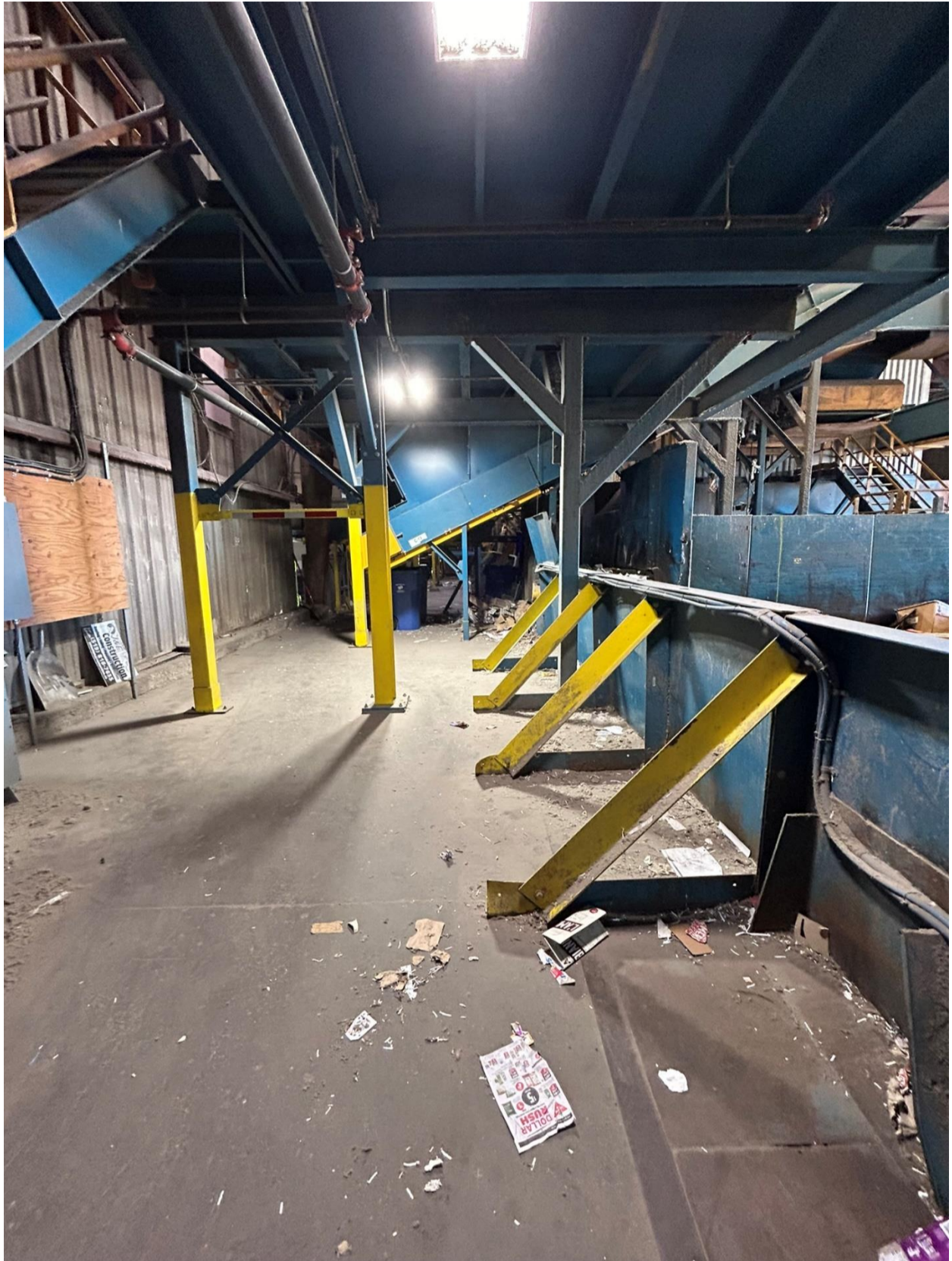


Fig 2.11- North bracing under Optic Sorter and mezzanine



Fig 2.12 –Left to right: Fibre optic sorter and Sort Room



Fig 2.13 – Sort room sprinkler line disconnect point



Fig 2.14 – Fibre Optic Sorter name plate



Fig 2.15 – Kaeser ASD 40 Compressor system supplying the Fibre Optic sorter located in Fibre optic compressor room on the mezzanine



Fig 2.16 – Compressor name plate



Fig 2.17 – Main distribution panel located on the west wall and south of baler



Fig 2.18 – Distribution panel name plate

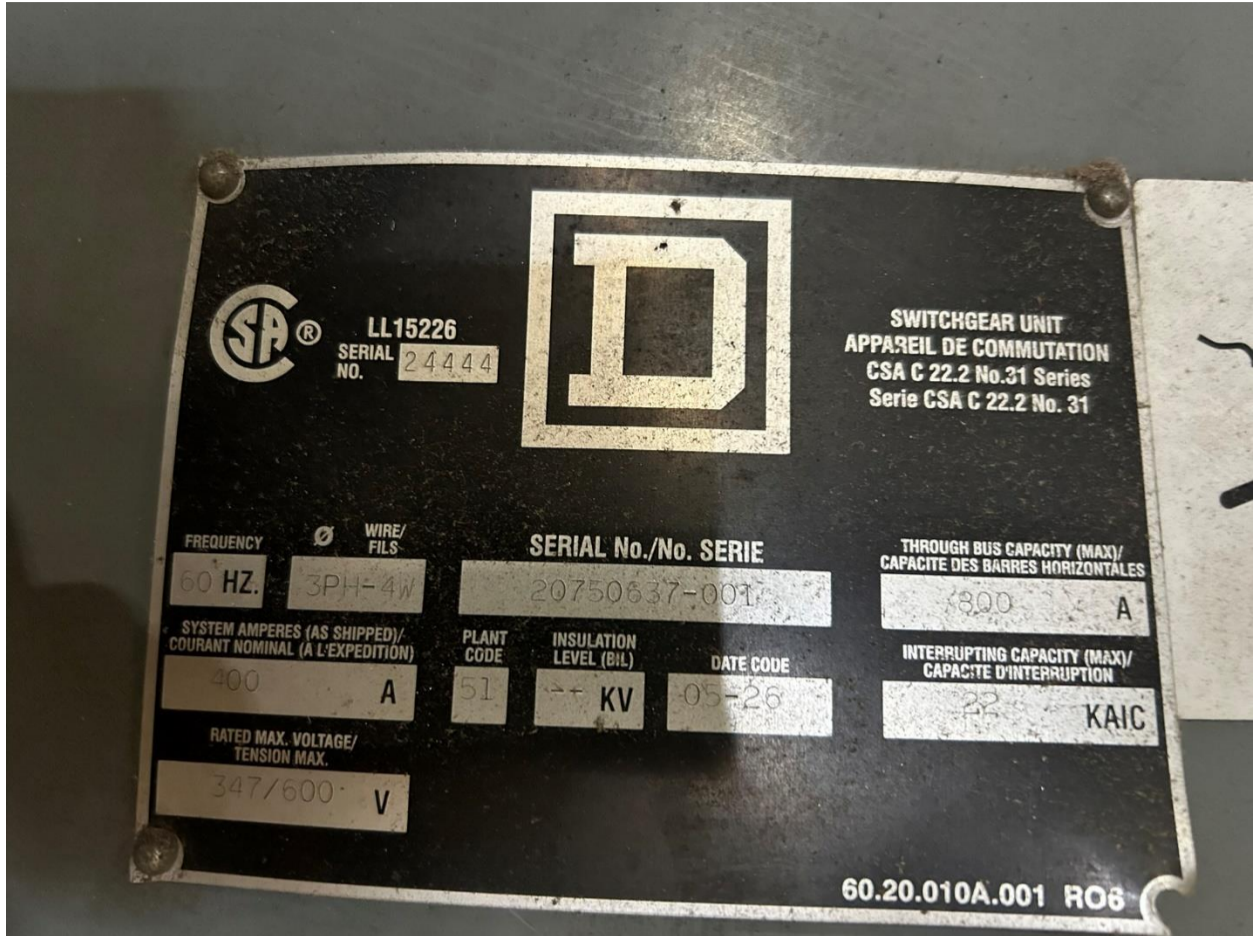


Fig 2.19 –Left to right: Sort room, final conveyors, screen, and sort conveyor (C3)



End of Addendum 1B

All other terms and conditions remain unchanged.